

# FRATERNAL ORGANIZATIONS ARE WELL REPRESENTED IN DULUTH

Masonic.  
 Palestine Lodge, No. 79, A. F. & A. M.  
 Euclid Lodge, No. 138, A. F. & A. M.  
 Ionic Lodge, No. 186, A. F. & A. M.  
 Duluth Council, No. 8, R. & S. M.  
 Keystone Chapter, No. 20, R. A. M.  
 Duluth Chapter, No. 59, R. A. M.  
 Duluth Commandery, No. 18, Knights Templar.  
 Chapter Rose Croix, Scottish Rite, North Star Lodge of Perfection, No. 6.  
 T. C. Pierson Chapter, No. 4, Knights Rose Croix.  
 Zenith Council of Kadoosh.  
 Duluth Consistory No. 3.  
 And Temple, Ancient Arabic Order, Nobles of the Mystic Shrine.  
 Eastern Star, Zenith Chapter, No. 28.  
 Ancient Order of Hibernians.  
 Divisions Nos. 1, 4 and 6.  
 Ladies' Auxiliary to A. O. of H.  
 Divisions Nos. 1 and 2.  
 Ancient Order of United Workmen.  
 Duluth Lodge, No. 10.  
 Fidelity Lodge, No. 105.  
 Rice's Point Lodge, No. 80.  
 Degree of Honor Auxiliaries, Duluth Lodge, No. 110.  
 Progress Lodge, No. 6, Zenith Lodge, No. 99.  
 Danish Brotherhood, Danish Lodge, No. 68.  
 Benevolent and Protective Order of Elks.  
 Duluth Lodge, No. 133.  
 Fraternal Order of Eagles.  
 Duluth Aerie, No. 79.  
 Foresters.  
 (Catholic Order)  
 Court St. Adelbert, No. 1532.  
 Court St. Clements, No. 675.  
 Court St. Francis of Assisi, No. 2450.  
 Court St. James, No. 614.  
 Court St. Louis, No. 177.  
 (United Order)  
 Court North Star, No. 42.  
 Court Phoenix, No. 14.  
 Court Central, No. 61.  
 Court Eastern Star, No. 88.  
 (Independent Order)  
 Court West Duluth, No. 797.  
 Independent Order of Odd Fellows.  
 Canton North Star, No. 14.  
 Central Link Lodge, No. 175.  
 Duluth Encampment, No. 36.  
 Duluth Lodge, No. 28.  
 Excelsior R. D., No. 69.  
 Majestic R. D., No. 60.  
 Zenith City Lodge, No. 160.  
 Marjontjerman Lodge, No. 17.  
 Improved Order of Redmen.  
 Mesaba Tribe, No. 25.  
 We-Ka-Ma-Wup Tribe, No. 17.  
 Knights of Columbus.  
 Duluth Council, No. 447.  
 Knights of the Royal Guard.  
 Division No. 132.  
 Knights of the Maccabees.  
 Duluth Tent, No. 1.

## GRAND ARMY OF THE REPUBLIC

Willis A. Gorman Post, No. 13.  
 Joshua B. Culver Post, No. 123.  
 Auxiliary, J. B. Culver Post, No. 69.  
 Sons of Veterans.  
 Duluth Camp, No. 5, Division of Minnesota.  
 United Spanish War Veterans.  
 Major A. M. Diggles Camp, No. 12.  
 Camp John G. McEwen, No. 6.

Ladies of the Maccabees.  
 Duluth Hive, No. L.  
 Knights of the Modern Maccabees.  
 Zenith City Tent, No. 104.  
 Ladies of the Modern Maccabees.  
 Hive No. 832.

Knights of Pythias.  
 Diamond Lodge, No. 46.  
 Kitchi Gammil Lodge, 123.  
 North Star Lodge, No. 25.  
 Riverside Lodge, No. 90.  
 Pythian Sisters, Gate City Temple, No. 10.

Loyal Order of Moose.

Duluth Lodge, No. 505.  
 Modern Samaritans.  
 Agate Council, No. 14, Proctor.  
 Alpha Council, No. 1.  
 Beta Council, No. 2.  
 Duluth Council, No. 3.  
 West Duluth Council, No. 4.

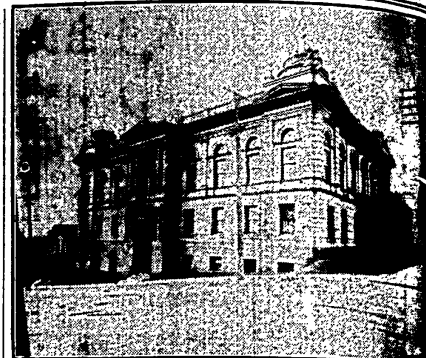
Benevolent Degree.  
 Alpha Council, No. L.  
 Beta Council, No. 2.  
 West Duluth Council, No. 4.  
 Modern Woodmen of America.  
 Duluth Camp, No. 2341.  
 Imperial Camp, No. 2206.  
 Old Hickory Camp, No. 1555.  
 Riverdale Camp, No. 2856.

National Council.  
 Duluth Council, No. 418.  
 Order of Brith Abraham.  
 Duluth Hebrew Lodge, No. 337.  
 Order of Owls.  
 Duluth Nest, No. 1200.  
 Order of Scottish Clans.  
 Clan Stewart, No. 50.  
 Polish National Groups.  
 St. Stanislaus Society Group, No. 81.

Royal Arcanum.  
 Duluth Council, No. 1488.  
 Mesaba Council, No. 1493.  
 Royal League.  
 Zenith Council, No. 161.  
 West Duluth Council, No. 255.  
 Pocahontas Council, No. 319.  
 Ruth Council, No. 314.  
 Woodmen of the World.  
 Duluth Camp, No. 8.  
 Brotherhood of American Yeomen.  
 Duluth Homestead No. 3131.



ELKS' HOME.



MASONIC TEMPLE.

The beautiful Masonic temple, was reached whereby the Scotch Rite, Palestine Lodge, No. 79, A. F. & A. M., Ionic Lodge, No. 186, A. F. & A. M., Keystone Chapter, No. 20, R. A. M., and Duluth Consistory, No. 14, R. A. M., were each to own one-fifth share. Each of the constitutional organs represented by a member on a board of control.